

MAKEUP IN GLASS

Vip packaging collection



MAKEUP IN GLASS

APPLICATION

Makeup in Glass is a collection of Vip 10 and 5 ml glass bottles that can be matched with flocked applicators, mascara brushes, eyeliner applicators, droppers, and roll on. They are perfect for beauty sets: combining the VIP bottles with the different accessories available, it is possible to create beauty collections with a unique design.

FEATURES

- Glass, a fully recyclable material
- The Re Vip Cap is mono-material made of PP. Mono-material plastic packaging is easily recyclable.
- Luxury and travel packaging available in two sizes: 10 and 5 ml
- Top level quality glass with thick bottom
- Extremely versatile: just one glass bottle matching infinite accessories



CHEEK
BLUSH



FACE
CONCEALER



FACE
HIGHLIGHTER



LIPS
PRODUCTS



EYESHADOW
COLOR & PRIMER



MASCARA



EYELASH
TREATMENT



EYELINER



BROW MASCARA
& SERUM



CIRCULARITY
widely recycled

UNPACKING Y/OUR SUSTAINABILITY POTENTIAL

Widely recycled: Re Vip cap is a mono-material accessory made of PP. Mono-material plastic packaging is easily recyclable.

DECORATION

Accessories decoration

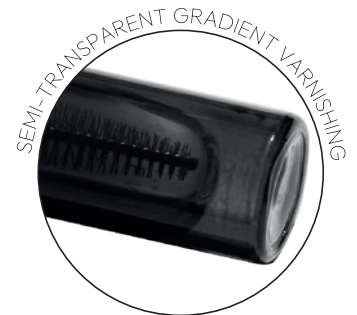
Variety of finishing options available.

Aluminum cap decoration

Shiny and matte finish, brush effect.

Glass decoration

External varnishing, metallization, screen printing, organic and ceramic screen printing, UV screen printing, "precious metals" screen printing, hot stamping, inkjet, 3D inkjet, laser etching, pad printing.



TECHNICAL DETAILS

Glass bottles



VIP 5 ML BOTTLE

NECK: 13/415

SHAPE: ROUND

MATERIAL: GLASS

DIAMETER: 18 mm

HEIGHT: 61.45 mm

Accessories: Vip roll on with cap 13/415 in alu | pp, Vip cap & Extra Vip cap with flocked applicators and mascara brushes, Re Vip cap with flocked applicators and mascara brushes, Vip dropper, Vip push dropper



VIP 10 ML BOTTLE

NECK: 13/415

SHAPE: ROUND

MATERIAL: GLASS

DIAMETER: 18 mm

HEIGHT: 94.75 mm

Accessories: Vip roll on with cap 13/415 in alu | pp, Vip cap & Extra Vip cap with flocked applicators and mascara brushes, Re Vip cap with flocked applicators and mascara brushes, Vip dropper, Vip push dropper



VIP SQUARED 5 ML BOTTLE

NECK: 13/415

SHAPE: SQUARE

MATERIAL: GLASS

DIAMENSION: 18.7 x 18.7 mm

HEIGHT: 61.1 mm

Accessories: Vip roll on with cap 13/415 in alu | pp, Vip cap & Extra Vip cap with flocked applicators and mascara brushes, Re Vip cap with flocked applicators and mascara brushes, Vip dropper, Vip push dropper



VIP SQUARED 10 ML BOTTLE

NECK: 13/415

SHAPE: SQUARE

MATERIAL: GLASS

DIAMENSION: 18.7 x 18.7 mm

HEIGHT: 94.4 mm

Accessories: Vip roll on with cap 13/415 in alu | pp, Vip cap & Extra Vip cap with flocked applicators and mascara brushes, Re Vip cap with flocked applicators and mascara brushes, Vip dropper, Vip push dropper

MANY ACCESSORIES & INFINITE COMBINATIONS!



TECHNICAL DETAILS

Accessories



VIP ROLL ON

NECK: 13/415
SHAPE: ROUND
BALL MATERIAL: PP | STEEL
Cap: Vip 13/415 alu cap,
Vip 13/415 PP cap



VIP DROPPER

NECK: 13/415
SHAPE: ROUND
COLLAR: 16.2 mm
COLLAR MATERIAL: PP | ALU + PP
GLASS PIPETTE: Ø 4.9 mm



VIP PUSH DROPPER

NECK: 13/415
SHAPE: ROUND
COLLAR: 16.2 mm
COLLAR MATERIAL: ALU + PP
GLASS PIPETTE: Ø 4.9 mm



VIP CAP

NECK: 13/415
SHAPE: ROUND
MATERIAL: ALU
DIAMETER: 18 mm
HEIGHT: 27 mm
Applicators: flocked applicators,
fiber mascara brushes and
eyeliner applicators



EXTRA VIP CAP

NECK: 13/415
SHAPE: ROUND
MATERIAL: ALU
DIAMETER: 18 mm
HEIGHT: 42 mm
Applicators: flocked applicators,
fiber and injected mascara
brushes

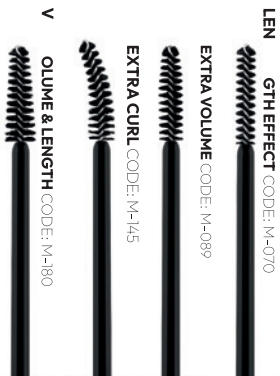


RE VIP CAP

NECK: 13/415
SHAPE: ROUND
MATERIAL: PP
DIAMETER: 17.7 mm
HEIGHT: 44 mm
Applicators: flocked applicators,
fiber and injected mascara brushes
& eyeliner felt tip applicator



FLOCKED APPLICATORS



FIBER MASCARA BRUSHES



INJECTED MASCARA BRUSHES



EYELINER

MASCARA BRUSHES

VOLUME & LENGTH



CODE: M-180
SHAPE: PYRAMIDAL
ROD MATERIAL: PP | POM
BRUSH MATERIAL: PBT + SUS
PERFORMANCE: VOLUME & LENGTH
Cap: Vip | Extra Vip

This pyramidal brush is designed to reach from root-to-tip and corner-to-corner of both your upper and lower lashes for big volume and length with 360 degree reach.

EXTRA CURL



CODE: M-145
SHAPE: CURVED
ROD MATERIAL: PP | POM
BRUSH MATERIAL: PBT + SUS
PERFORMANCE: EXTRA CURL
Cap: Vip | Extra Vip

The innovative curved brush styles every lash from bottom to top offering spectacular volume and curling power. Easy application and immediate push-up effect.

EXTRA VOLUME



CODE: M-089
SHAPE: OVAL
ROD MATERIAL: PP | POM
BRUSH MATERIAL: PBT + SUS
PERFORMANCE: EXTRA VOLUME
Cap: Vip | Extra Vip

The oval brush is designed to shape and intensify fullness of lashes. Brush fibers grab close to the root, boosting length and volume for a bold false-lash look.

LENGTH EFFECT



CODE: M-070
SHAPE: SLIM
ROD MATERIAL: PP | POM
BRUSH MATERIAL: PBT + SUS
PERFORMANCE: LENGTH EFFECT
Cap: Vip | Extra Vip

Take lashes to new lengths for an irresistible, natural enhanced look. The slim brush is designed to reach shorter lashes for super separation and extraordinary length.

CURL & DEFINITION



CODE: APS58
SHAPE: 5 CAVITIES
ROD MATERIAL: PP
BRUSH MATERIAL: PLANT-BASED FIBER*
PERFORMANCE: CURL & DEFINITION
Cap: Extra Vip | Re Vip

Special applicator with 5 cavities and 5 tips, for a combined makeup effect. Lashes are volumized and curved, thanks to recesses on brush' sides. Available in two colors: blue and yellow.

SEPARATION & VOLUME

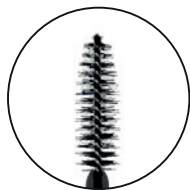


CODE: APS297
SHAPE: PYRAMIDAL
ROD MATERIAL: PP
BRUSH MATERIAL: NYLON FIBER
PERFORMANCE: SEPARATION & VOLUME
Cap: Extra Vip | Re Vip

Rigid, solid fiber, embossed surface for charging and releasing. Linear, conical shape to easily charge and comb, even the inner and smaller lashes. Lashes are charged and combed. The fiber rigidity allows a curling action, too.

*derived from castor oil

MAX DEFINITION & VOLUME



CODE: APS263
SHAPE: STAR-SHAPED
ROD MATERIAL: PP
BRUSH MATERIAL: PLANT-BASED FIBER*
PERFORMANCE: MAX DEFINITION & VOLUME
Cap: Extra Vip | Re Vip

Plant based solid fiber, perfect for combing, separating and charging. The star shape of the brush has 6 reservoirs of bulks, that is profusely released during usage. Volume, separation and combing are ensured.

VOLUME & DEFINITION



CODE: APS159
SHAPE: CONICAL
ROD MATERIAL: PP
BRUSH MATERIAL: NYLON FIBER
PERFORMANCE: VOLUME & DEFINITION
Cap: Extra Vip | Re Vip

Thin, conical brush for an extremely easy and quick application. Extraordinary wavy fiber to catch all the lashes and deeply penetrate through them, even to the inner, shorter ones. Profuse charge, wide-open lashes, from roots to tips.

DEFINITION & EXTRA VOLUME



CODE: APX105
SHAPE: PIN SHAPED
ROD MATERIAL: PP
BRUSH MATERIAL: PLANT-BASED FIBER*
PERFORMANCE: DEFINITION & EXTRA VOLUME
Cap: Extra Vip | Re Vip

Captivating brush with a "pin" shape which guarantees performing results. Thinner tip to reach inner and short lashes and stylize. Wide body and big reservoirs to catch the bulk and release it profusely on all the lashes, from roots to tips. The quite rigid fiber helps to curl and comb.

ALL IN ONE



CODE: APS434
SHAPE: CONCAVE
ROD MATERIAL: PP
BRUSH MATERIAL: PLANT-BASED FIBER*
PERFORMANCE: ALL IN ONE
Cap: Extra Vip | Re Vip

Lashes are charged and combed by a woman-shaped applicator for volume and curled lashes: concave body to charge, bigger extremities to stylize. The fiber rigidity helps to define and separate the lashes.

BOLD LASHES



CODE: APP 09
SHAPE: CONCAVE
ROD MATERIAL: PP | PETG
BRUSH MATERIAL: HYTREL
PERFORMANCE: VOLUME
Cap: Extra Vip | Re Vip

Ergonomic, woman-shaped applicator to perfectly follow the eye-shape. Concave, central body to charge and volumise. Rounded extremities to stylise. Woman-shaped brush to curl volumised lashes.

CURLING YOU



CODE: APP 19
SHAPE: CONCAVE
ROD MATERIAL: PP | PETG
BRUSH MATERIAL: HYTREL
PERFORMANCE: VOLUME & CURL
Cap: Extra Vip | Re Vip

Ergonomic brush applicator to catch all the lashes. Concave, central body to charge, volumise and curl. Cylindrical side to stylise. Asymmetrical brush for curled and volumised lashes.

*derived from castor oil

INTENSE LOOK



CODE: APP 05
SHAPE: ASYMMETRICAL
ROD MATERIAL: PP | PETG
BRUSH MATERIAL: HYTREL
PERFORMANCE: ALL IN ONE
Cap: Extra Vip | Re Vip

Innovative asymmetrical shape to guarantee an “all in one” makeup effect: extra volume, definition and length at the same time. Sharp top to easily stylize. Maxi volume and length, even to inner, shorter lashes.

LONG LASHES



CODE: APP 04
SHAPE: PYRAMIDAL
ROD MATERIAL: PP | PETG
BRUSH MATERIAL: HYTREL
PERFORMANCE: DEFINITION & LENGTH
Cap: Extra Vip | Re Vip

Linear, conical shape for easy and pleasant application. Lashes’ roots are fully and quickly charged, tips are well lengthened. The rigidity of the brushes helps to curl the lashes from roots to tips.

EYEBROW



CODE: APS378
SHAPE: PYRAMIDAL
ROD MATERIAL: PP
BRUSH MATERIAL: NYLON SOLID FIBER
PERFORMANCE: COMB & FIX
Cap: Extra Vip

Extremely small brush, suitable for give shape and color to your eyebrows. The solid and thin fibers are perfect to comb and fix unruly eyebrows with a transparent fixing gel or to act as a mascara with a coloured formula.

EYELINER APPLICATORS

FELT TIP EYELINER



CODE: DIP-03
ROD MATERIAL: PP
FELT TIP MATERIAL: POLYESTER FIBER
Cap: Re Vip

Thin and flexible felt tip eyeliner, it allows an easy and effortless application. The tip draws a precise line on your eyelids, without smudges. Suitable also for the less experienced users.

BRUSH EYELINER



ROD MATERIAL: PP
BRUSH MATERIAL: PBT
Cap: Vip

A brush applicator with soft fibers, that allow a clean and buildable application: the line stroke can be thicker or thinner, according to taste.

FLOCKED APPLICATORS



ICON



CODE: 902E
SHAPE: CLASSIC
ROD MATERIAL: PP | POM
FLOCK MATERIAL: SOFT HYTREL,
STANDARD HYTREL
FLOCK HARDNESS: SOFT & STANDARD
Cap: Vip | Extra Vip | Re Vip

The iconic tip with a soft core that makes this applicator suitable for lipgloss, liquid lipstick, lip treatment such as lip oils or serums and concealer.

SWEET ANGLE



CODE: 902I
SHAPE: CURVED
ROD MATERIAL: PP | POM
FLOCK MATERIAL: SOFT TPU,
STANDARD HYTREL
FLOCK HARDNESS: SOFT & STANDARD
Cap: Vip | Extra Vip | Re Vip

The angled wide cut provide an high precision that allows to shape the lip contour. Suitable for high viscosity formulas like liquid lipsticks in strong and deep colors.

CURVY



CODE: 902J
SHAPE: FLAT
ROD MATERIAL: PP | POM
FLOCK MATERIAL: SOFT TPU,
STANDARD HYTREL
FLOCK HARDNESS: SOFT & STANDARD
Cap: Vip | Extra Vip | Re Vip

The round shape tip is very comfortable for lip treatment and light coverage lipgloss.