

# DOUBLE GLASS

ethical luxury



**berlin**<sup>®</sup>  
PACKAGING

# DOUBLE GLASS

Double Glass is a luxury packaging solution that is reusable and refillable, improving customer experience and loyalty. Customers can reuse the packaging and refill it with easy steps thanks to the innovative mechanism designed by Berlin Packaging Beauty.



# CHOOSE THE PERFECT MATCH!

## 2 REFILL OPTIONS

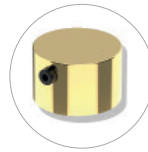


refill  
vial  
GLASS



refill  
ampoule  
GLASS

## 3 ACTUATOR OPTIONS



base  
actuator  
PP | PP + ALU



cream  
actuator  
PP



spray  
actuator  
PP



## UNPACKING Y/OUR SUSTAINABILITY POTENTIAL



**REUSE**  
reusable & refillable  
**CIRCULARITY**  
separable components

**Reusable & Refillable:** Double Glass is designed for the reuse of packaging: once the product is finished, the glass ampoule and vial can be easily replaced, up to a maximum of 25 refills.

**Separable components:** Double Glass is easy to disassemble, the components of the packaging can be easily separated and differentiated by material.

SEPARATE GLASS  
FROM PLASTIC



## BUY, RECYCLE, REFILL...REPEAT!



BUY



ENJOY



RECYCLE

**25**  
REFILLS

The pump ensures the packaging to be refilled up to 25 times.



BUY BACK



REFILL



ENJOY

# REFILLABLE GLASS PACKAGING

## TECHNICAL DETAILS



### DOUBLE GLASS 30 ML

NECK: SPECIAL  
SHAPE: ROUND  
BOTTLE MATERIAL: GLASS  
COLLAR MATERIAL: PP  
COVER MATERIAL: PETG  
DIAMETER: 42.5 mm  
HEIGHT with COVER: 132.5 mm  
DOSING: 250 mcl



### REFILL AMPOULE & VIAL 30 ML

NECK: SPECIAL  
SHAPE: ROUND  
REFILL MATERIAL: GLASS  
CAP MATERIAL: PP  
DIAMETER: 28.3 mm  
HEIGHT with CAP:  
Ampoule 88.8 mm | Vial 84.8 mm



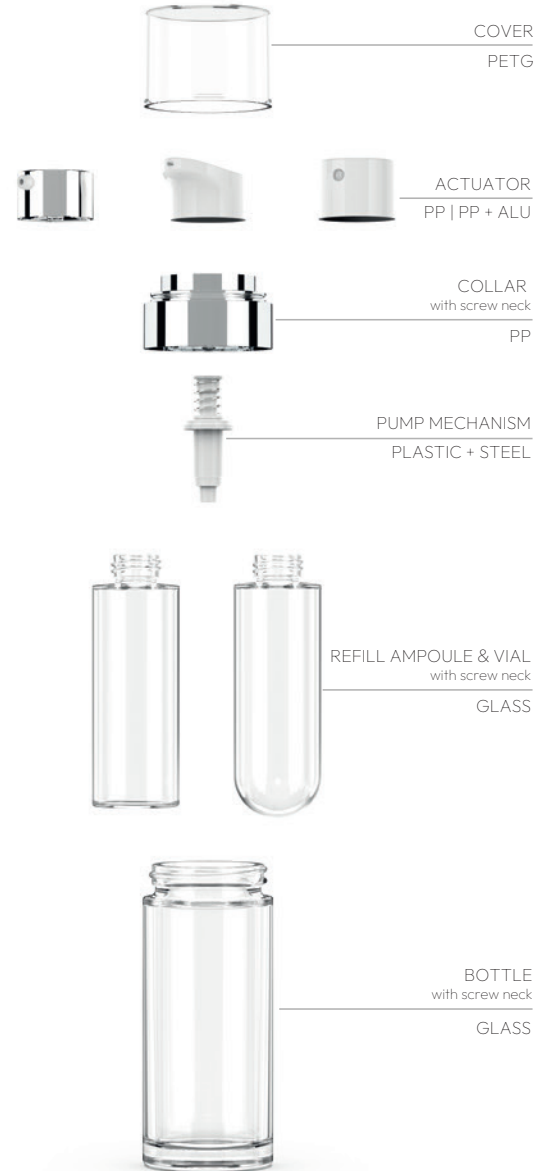
### DOUBLE GLASS 30 ML

NECK: SPECIAL  
SHAPE: ROUND  
BOTTLE MATERIAL: GLASS  
COLLAR MATERIAL: PP  
COVER MATERIAL: PETG  
DIAMETER: 42.5 mm  
HEIGHT with COVER: 105.7 mm  
DOSING: 250 mcl



### REFILL AMPOULE & VIAL 30 ML

NECK: SPECIAL  
SHAPE: ROUND  
REFILL MATERIAL: GLASS  
CAP MATERIAL: PP  
DIAMETER: 28.3 mm  
HEIGHT with CAP:  
Ampoule 59.8 mm | Vial 55.8 mm



COVER  
PETG

ACTUATOR  
PP | PP + ALU

COLLAR  
with screw neck  
PP

PUMP MECHANISM  
PLASTIC + STEEL

REFILL AMPOULE & VIAL  
with screw neck  
GLASS

BOTTLE  
with screw neck  
GLASS

# DOUBLE GLASS



## APPLICATION

Ideal for luxury beauty products:

- Primer • Foundation • Highlighter • Face Cream • Face Mask
- Styling Hair Cream • Makeup Remover • Gel Cream
- Specific Treatment • Serum • Hair Treatment
- Face Mist • Face Toner • Spray Cream • Spray SPF
- After Sun Treatment • Face & Body Oils • Moisturizing Water

## SUITABLE FOR SKINCARE & MAKEUP FORMULAS

### Cream actuator



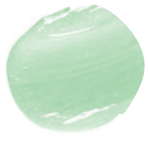
serum



lotion



face mask



gel



foundation



highlighter



face mist  
& moisturizer



lotion  
& cream



face  
& body oil

### Spray actuator

## DECORATION

Get a new luxurious and fabulous look for your beauty product!  
Here some inspirations:



### Outer bottle decoration

External varnishing, inner varnishing, metallization, acid etching, partial acid etching, screen printing, organic and ceramic screen printing, UV screen printing, "precious metals" screen printing, hot stamping, inkjet, 3D inkjet, laser etching.

### Refill decoration

External varnishing, metallization, screen printing, hot stamping.